

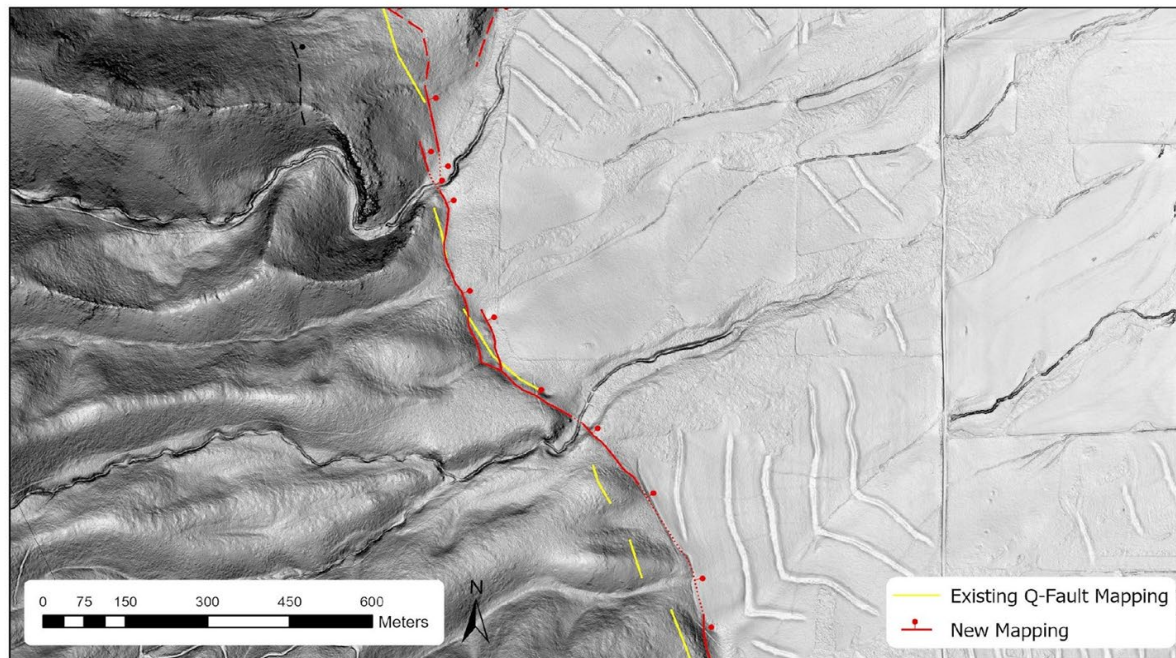


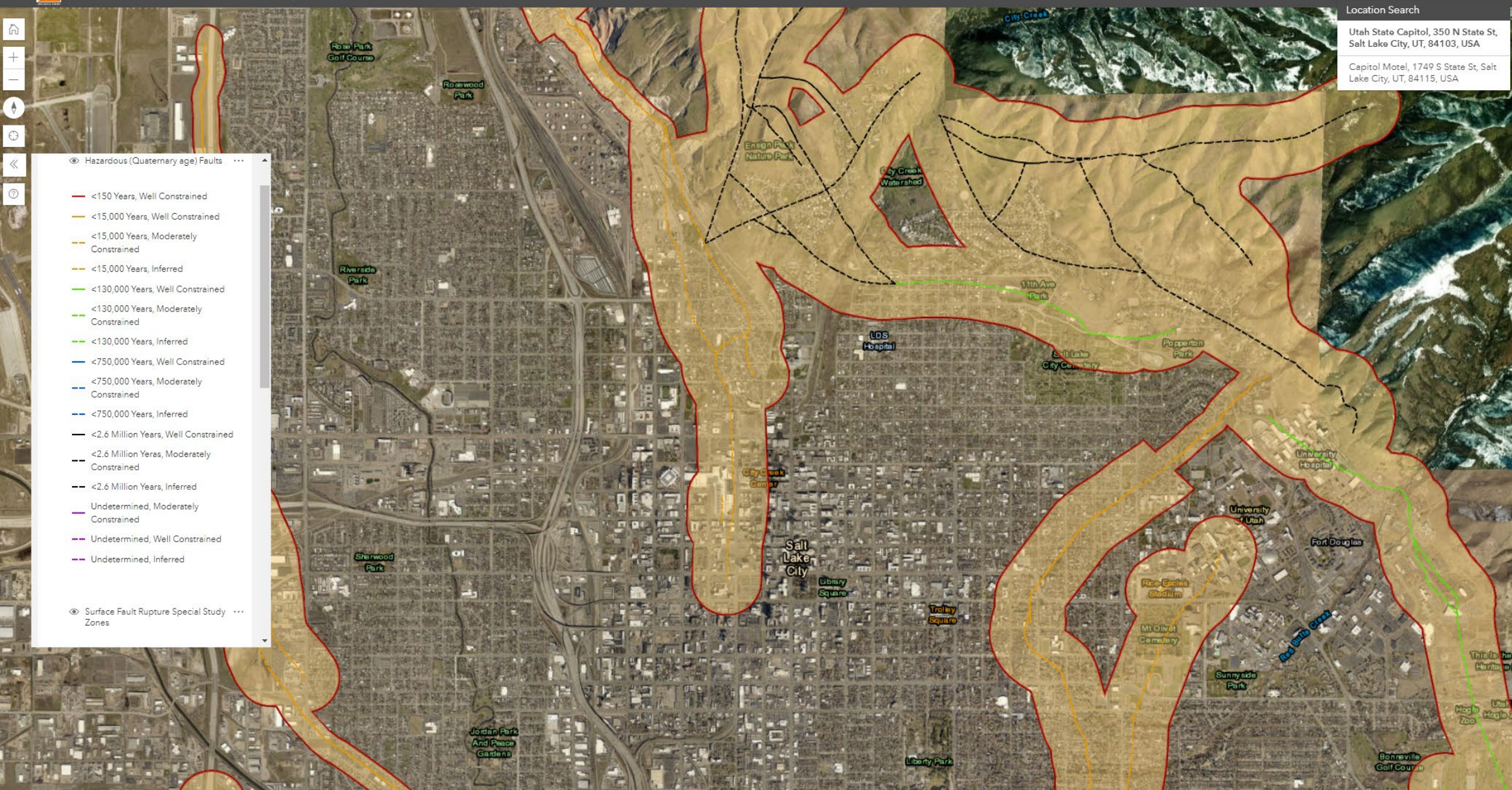
Utah Geological Survey Updates



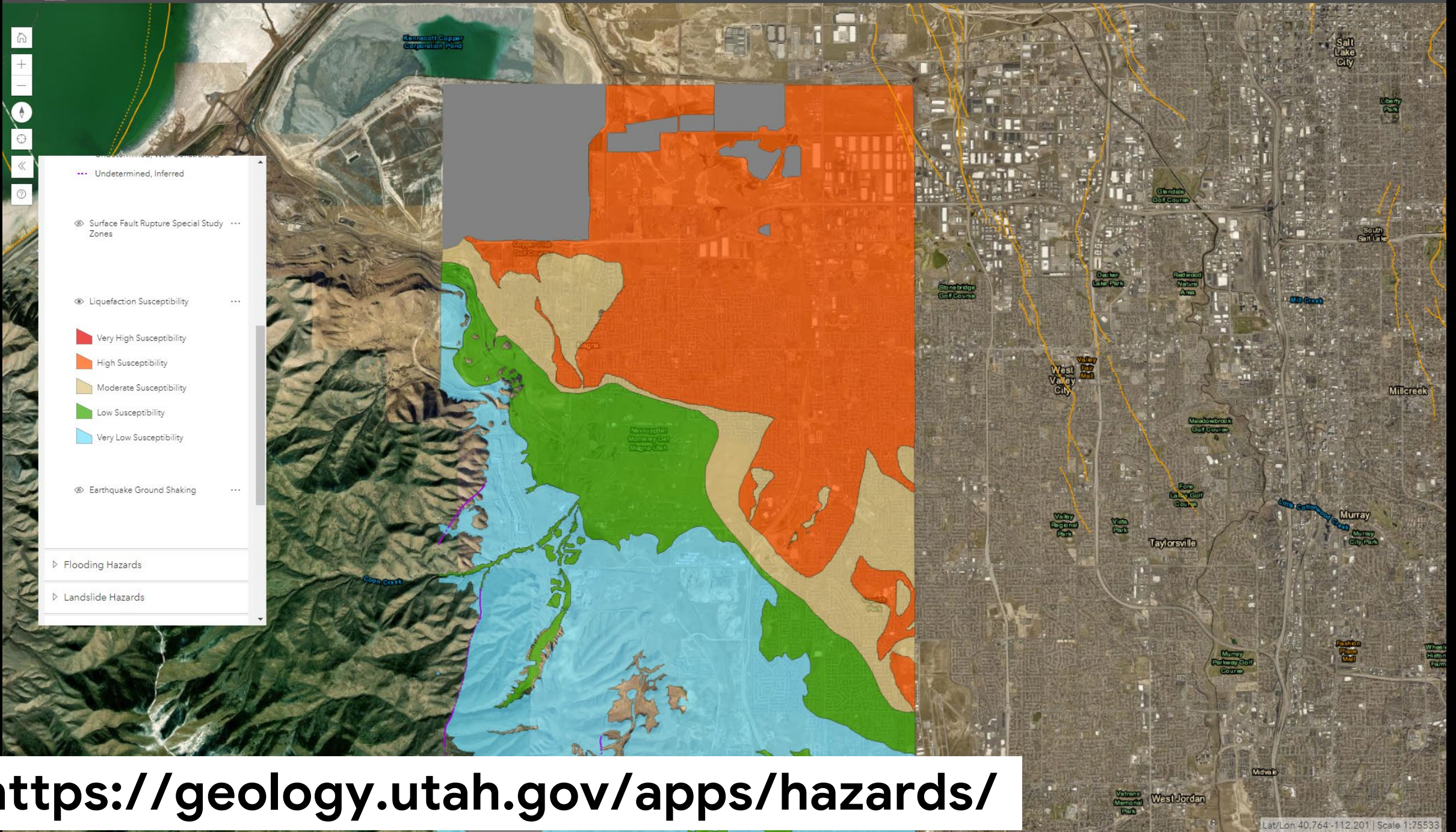
Recently Completed Fault Mapping

- Wasatch Fault Zone (UGS RI-280): re-mapped at 1:24,000 scale (or better) – available in UGS's *Utah Geologic Hazards Portal*
- East and West Cache Fault Zones (USGS FTR): re-mapped 14 1:24,000 scale quadrangles. Available in the *Utah Geologic Hazards Portal* in spring/early summer 2021





<https://geology.utah.gov/apps/hazards/>



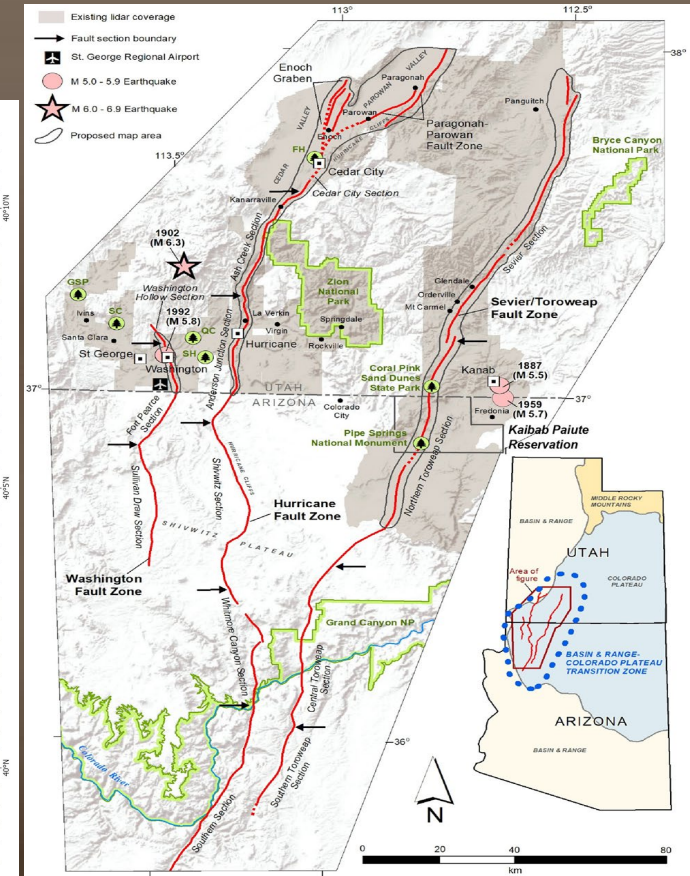
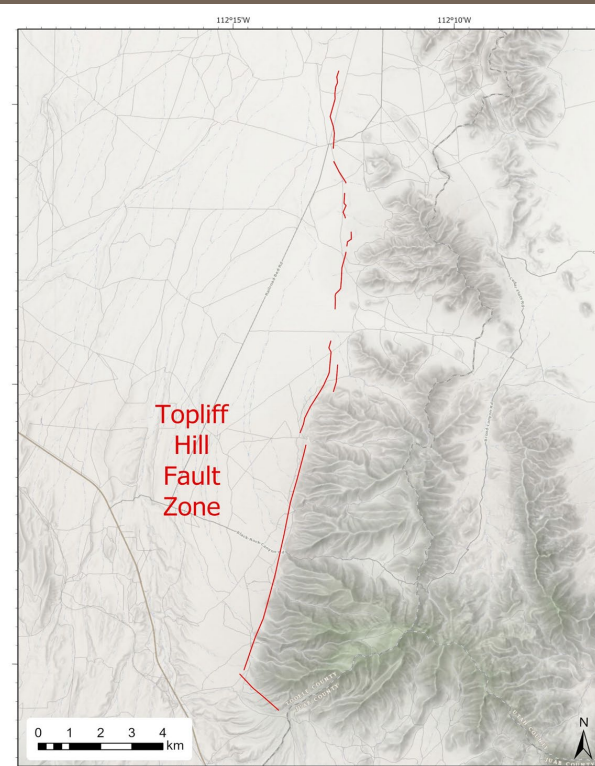
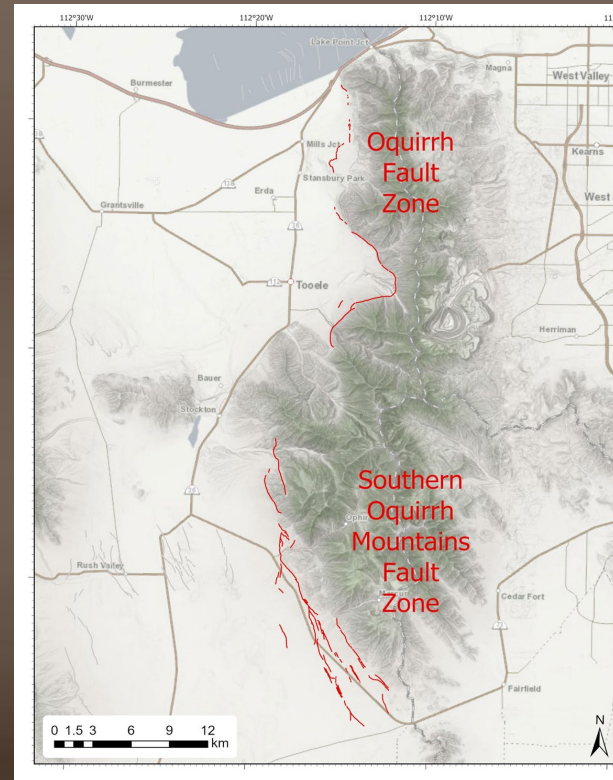
<https://geology.utah.gov/apps/hazards/>

Fault Mapping – In Progress

- East and West Bear Lake Faults (collaborative with Idaho Geological Survey): Available in the *Utah Geologic Hazards Portal* in spring 2021.
- Oquirrh, Southern Oquirrh Mountains, and Topliff Hills fault zones: Available in the *Utah Geologic Hazards Portal* in spring 2021.
- Hurricane, Washington, and Sevier/Toroweap faults (collaborative with the Arizona Geological Survey): Available in the *Utah Geologic Hazards Portal* in late fall 2021.

Potential Future Projects:

- Hansel/Pocatello Valley fault mapping
- Northern WFZ/WCFZ paleoseismic study



Utah Earthquake Working Group Meetings

Utah Quaternary Fault
Parameters Working Group
meeting (UQFPWG)
February 2, 2021

geology.utah.gov/UQFPWG21

Basin and Range Province
Earthquake Working Group
meeting (BRPEWG)
February 9, 2021

geology.utah.gov/BRPEWG21

- Virtual, online format. Free to attend.
- Contact Emily Kleber (ekleber@utah.gov) or Adam Hiscock (adamhiscock@utah.gov) for additional details and meeting registration information

